

PREPARED BY: SPERLICH CONSULTING, INC. \* 821 1/2 COLUMBUS STREET RAPID CITY SD 57701 \* (605) 721-4040

05RZ020

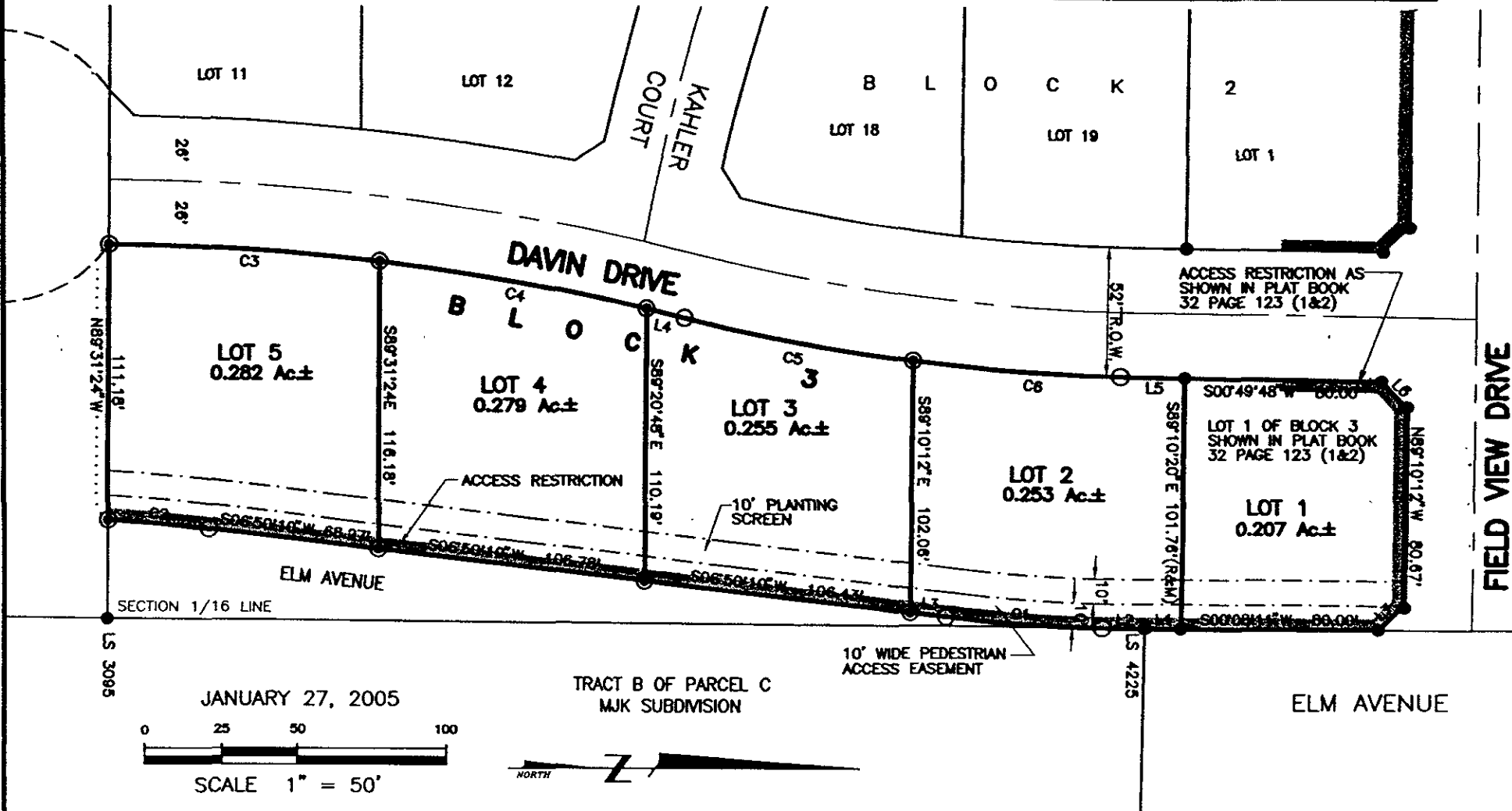
# EXHIBIT 'A'

## LOTS 1 THROUGH 5 OF BLOCK 3, KENSINGTON HEIGHTS SUBDIVISION

LOCATED IN "GOVERNMENT" LOT 4  
SECTION 18, T1N, R8E, BHM,  
RAPID CITY, PENNINGTON COUNTY, SOUTH DAKOTA

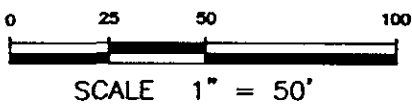
CURVE	LENGTH	RADIUS	DELTA	CHORD BEARING	CHORD DISTANCE
C1	62.97	560.00	6°26'35"	S03°36'52"W	62.94
C2	39.73	640.00	3°33'24"	S05°03'17"W	39.72
C3	83.23	752.65	6°20'09"	S03°59'53"W	83.19
C4	91.96	752.66	7°00'01"	S10°39'55"W	91.90
C5	108.00	958.29	6°27'26"	S09°58'43"W	107.94
C6	107.66	958.29	6°26'12"	S03°31'53"W	107.60

LINE	LENGTH	BEARING
L1	14.06	S00°08'11"W
L2	16.31	S00°23'35"W
L3	14.68	S06°50'10"W
L4	16.04	S13°41'12"W
L5	24.77	S00°49'48"W
L6	14.14	S45°49'48"W
L7	14.23	N44°31'01"W



JANUARY 27, 2005

TRACT B OF PARCEL C  
MJK SUBDIVISION



FIELD VIEW DRIVE