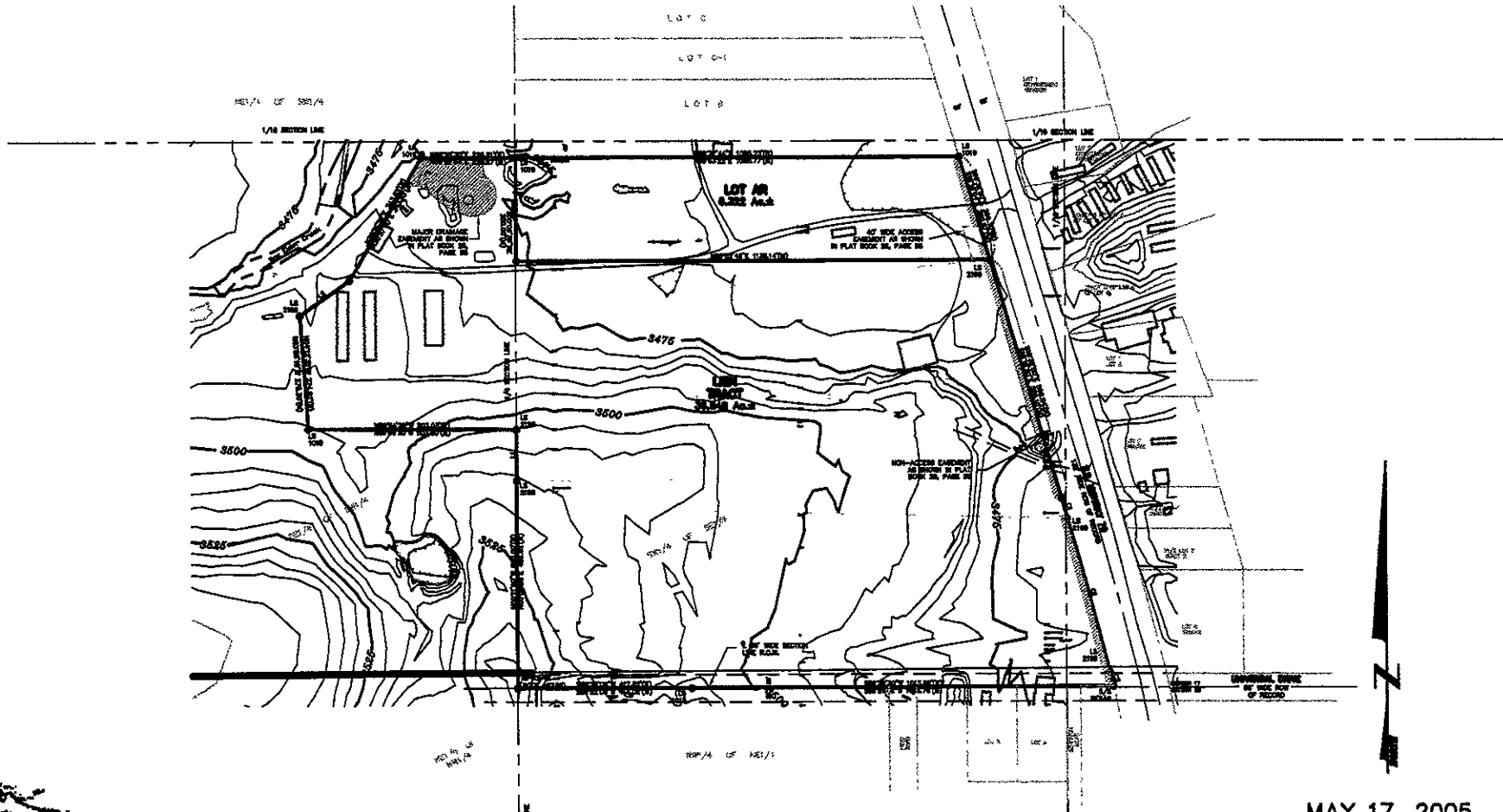


05PL072

TOPOGRAPHICAL SURVEY
LOTS A, B, AND C
OF KELLER SUBDIVISION
 LOCATED IN THE S1/2 OF SE1/4
 SECTION 17, T2N, R7E, BHM
 PENNINGTON COUNTY, SOUTH DAKOTA

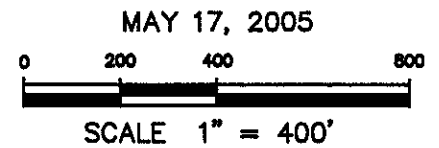


Renner Associates, LLC.



CITY HALL 1903

616 Sixth St. * Rapid City, SD 57701 * 605/721-7310
 FAX: 605/721-7313 * E-MAIL: Gary@RennerAssoc.com



C:\Poody\Drawings\2031(Keller)\2031.03\RED.dwg 5/17/05 10:15:00 am MST