

PLAT OF LOTS 1 & 2 OF LOT A KELLER SUBDIVISION,

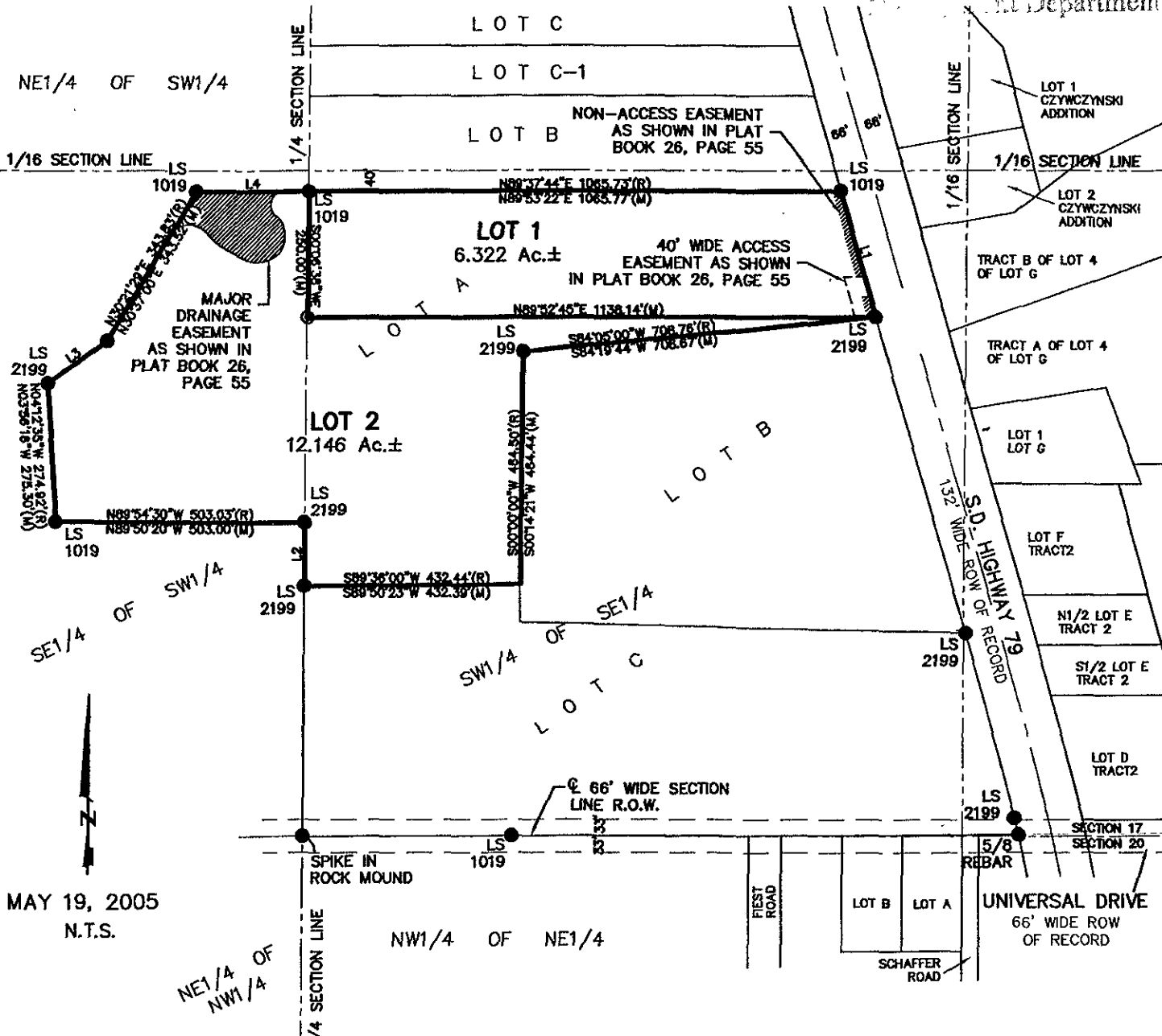
(formerly Lot A of Keller Subdivision)

RECEIVED

LOCATED IN THE S1/2 OF SE1/4
SECTION 17, T2N, R7E, BHM,
PENNINGTON COUNTY, SOUTH DAKOTA

MAY 19 2005

Rapid City Growth
and Department



MAY 19, 2005
N.T.S.



Renner Associates, LLC.

616 Sixth St. * Rapid City, SD 57701 * 605/721-7310
FAX: 605/721-7313 * E-MAIL: Gary@RennerAssoc.com